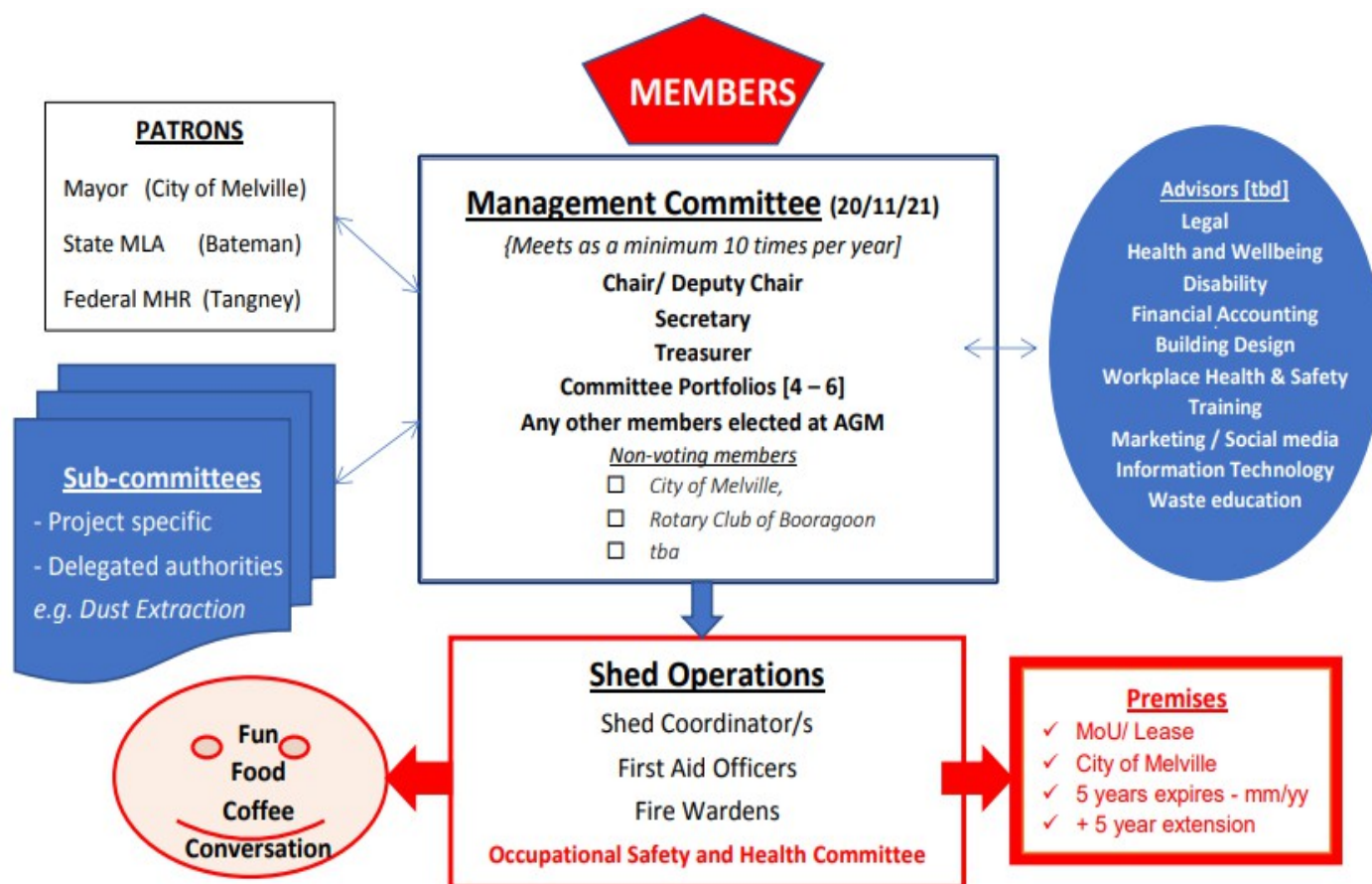


Overview of Shed Management

Operates under [WA Associations Incorporations Act \(2015\)](#)

- MCMS specific [Rules/ Constitution](#) complemented by:
- Strategic and Operational Plans
 - Policies and Procedures
 - Forms

ABN 55 165 525 462 Incorporated 11/01/2021



Objects

- To address the issues of men's mental, physical, and emotional health and wellbeing in the community.
- To engage the elderly, differently abled, youth, veterans, indigenous and other groups of men from surrounding suburbs and to specifically address any issues of loneliness, isolation, and depression.
- To support the social interaction of men in transitional periods (e.g., separation, redundancy, bereavement, retirement, ill health, relocation, and respite care).
- To share, disseminate and preserve the skills, abilities and interests that are relevant to the community.
- To facilitate links between men and health-related agencies, family organisations and specialist health professionals within the community.
- To advocate the benefits of partnerships between men's sheds and community.
- To develop a men's shed which can operate on a cost-neutral basis, that is, its ongoing costs can be met or exceeded by its revenue.
- To initiate and continue activities of relevance to men.
- To provide strong social fabric for men experiencing isolation.