

Noises from:

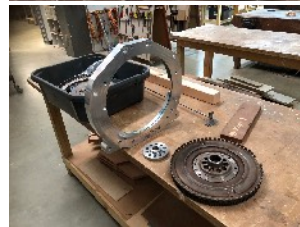
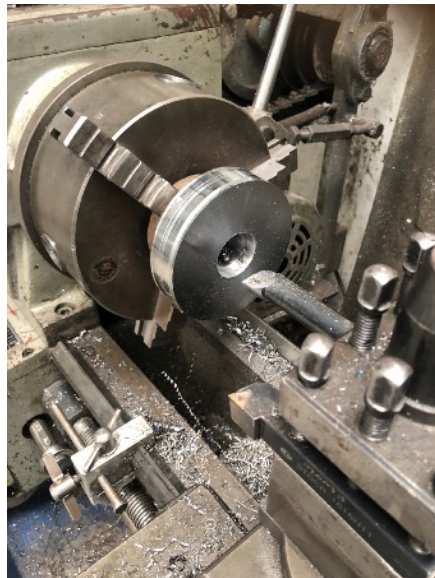


Precision Turning.

From Logan Marriott

Thought I'd share some successful precision work on the big old lathe recently, to show what the old one's capable of

This spacer for my Engine/Gearbox needed to be 14mm thick, and have a 43mm ID on one side, and 43mm OD on the other. Using the 4 jaw chuck I got it to 0.03mm alignment



Cards and Photography Group Dinner and Get Together

One evening, late September, these two groups got together to share a fine Italian meal cooked by some of the members of the group, as well as some excellent cakes provided by two other members. The bar was open too so red wine, white wine and beer enhanced the meal.

Once eating was over - there was much conversation going on before, during and after the meal - there were some tall tales, limericks and intriguing stories recounted, recited amid disbelief from the audience. A very congenial atmosphere made the evening a great success. Thanks to the organiser, Richard Lang, and all those who contributed in any way.



Record Broken!!

On Tuesday 13th October the largest group ever turned up for Morning Tea. On Tuesdays the first part of the day is taken up with cleaning and sorting out of everything within the Shed. This is followed up by tea/coffee and scones and crepes. The question is “did all who sat down to morning tea all get involved in the tidy up pr were they attracted by George’s scones and the crepes???? **Food for thought!!**



Bridge in the Covid Era

The bridge group, restricted by covid protocols, decided to take the electronic route to allow them to keep playing, so with laptops, tablets and in one case a full desktop Mac each member of the group was able to sign up to a program which meant they could all play their cards by selecting them on screen. It looks like a really efficient program and all players look to be very comfortable in the use of the technology. Personally I would still prefer to use real cards!!

Somehow Bill Holly managed to get in nearly all the photos and it was a pity that Richard Lang, organiser of this group, was not there on the day the photos were taken, Richard has driven the project forward since it began and even managed to convince Klaas to take up the technology challenge!!



Craft Market

On Sunday the 8th of November, Mosman Park Men’s Shed will be hosting our very popular, community event, **Mosman Craft Market**, which has recently joined forces with The Town of Mosman Park’s **Community Fair**.

This annual Market attracts an amazing selection of West Australian produced crafts and useful items for every taste and budget. It is also conveniently timed, being close to Christmas and thus able to solve some of those difficult present problems.

Families will be well catered for with a variety of foods from various outlets including, of course, the fabled Men’s Shed BBQ. Children will be able to enjoy a special entertainment programme courtesy the Town of Mosman Park. Four musical groups will provide continuous live entertainment, as usual, for those who wish to enjoy the ambience whilst dining out on some of the Shed’s delicacies! There will be a display of motorbikes (plus some vintage vehicles), from the latest in speedsters to those that are, or have been, lovingly restored by their new owners. For those who feel the need to exercise the body “**featherstone**” will be offering both “**Pilates in the Park**” from 10:00 – 10:45 (bring your own mat and towel!) plus “**Yoga**” sessions between 11:00 and 12:00, and “**Posture Assessment and Advice**” from 10:00 to 12:00.

The photos from last year’s Craft Market give an indication of some of what goes on on the day.



The organisers of this big event need as much support from Members as possible - there is so much to do on the previous day as well as on the actual Market day so get in touch with Mike if you have now already done so.

Mike Ansell Event Organiser

CHAIRMAN'S REPORT

Life at the Shed is still on the boil! The number of new members is increasing, new jobs continue to flow in, customers are going away happy and our daily attendance number continues to rise. But what is most important of all, members are enjoying their time at the Shed.

Just to summarise what has happened in the last month here are some salient points:

- The Photography and Bridge groups had a combined dinner which was a great evening organised by Richard Lang and others.
- The two Steves (Grarum and Mercer) ran sessions on Fusion 360 3D drafting software so that members could use that learning to go into 3D printing and use the CNC router.
- Dozens of jobs have been completed by a group of 'eager beavers' who are always willing to come along and spend some or all of their time contributing to one of the essential components of the Shed. We all thank you for your contribution.
- Tuesday's morning tea continues to get bigger than Texas. Last week we had a record 42 members. Again this would not happen without the contribution of the 'Tuesday cooks' who turn on those very 'healthy' scones and pancakes. I would be a lot happier if we had more of that 42 helping with the cleaning at 8.30 am rather than seeing the rush to get a seat at the table just before 10 am!
- We have had both the Federal Member, Celia Hammond and ToMP CEO, Carissa Bywater visit the Shed over the past weeks. Both were highly impressed with what they saw. Their impressions were not just about the range of facilities we have, but the enthusiasm and friendliness that was on display by the members.
- David Beckley's tour group is starting to gain traction with tours being arranged for members to all points of the compass (possibly not West). Talk to David if you are interested in being involved.

The end of the year is nigh and that means the build up to Christmas for us all; a number of important Shed events coming up in that time:

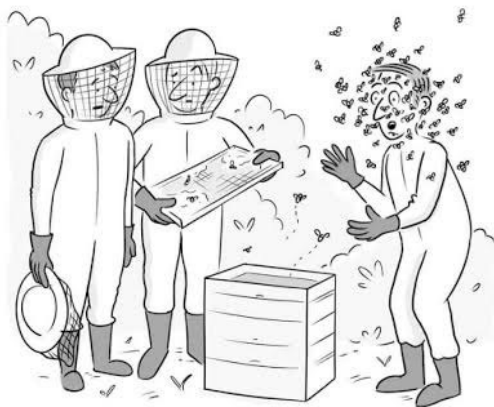
- Probably the most important event and the one that takes so much of our energy, is the Community Craft Market. This year is going to be a little different in that we are combining with the Mosman Park Council. Mike Ansell is again in charge, but has volunteers to help out, but he needs more. Please put your hand up to spend some of your time before, on the day or after the event to help out. There are many and varied tasks to be done, but when we all sit down at the end of the day with a few drinks there is so much satisfaction evident in what we have achieved. Please make your contribution.
- Melbourne Cup Lunch is on again and you need to get in early to make a booking. This will be done on line and you will have to pay \$20 each up front. Bob Grocke and Barry Gibson are the cooks 'at crossed carving knives' and they have planned a great menu. Lady friends are welcome, particularly if they are wearing a fascinator!
- The Christmas Wind Up is the last event of the year and that is usually a great evening. When it is advertised be involved.
- Gabi Brown (She who shall be obeyed by me) has initiated a wives and partners group that runs parallel to the men's group. This is expanding in numbers and there are discussions afoot to have sub groups such as sewing and patchwork. For those who are worried about a feminist invasion of the our Shed, Gabi and I are determined not to allow the wives/partners group interfere with the men's group in any way.

For any enquiries about the above matters give the Shed a ring 9383 3354 to get more details.

As I am sure you have gathered from the above that to operate like we do takes an enormous effort. If only half the group make a contribution , this means our Shed suffers. Please do your bit, make an effort and you will get it back in spades..... our Shed is like that.

Tony Brown. Chairman

And For The Bee Keepers



"I told him as an expert in the field I strongly recommend wearing it, but he just kept bringing up his 'rights.'"

One Of The Most Iconic Photos

Bob Hope, John Wayne, Ronald Reagan, Dean Martin and Frank Sinatra



Interesting Light Changes from Richard Lang.



And An Ad From Dave Russell



THE MAN CAVE

A Free Senior's Week Mini Expo

Showcasing clubs, activities, organisations and groups in our local community that men over the age of 55 can join either by themselves or with a partner, carer or friend.

Have a go at activities, listen to music, watch entertainment and enjoy a coffee.

Tuesday, 10 November 2020
10.00am to 1.00pm
Blue Gum Community Centre,
33 Moolyeen Road, Brentwood

Take bus route 500 from the Booragoon Bus Station

 For more information, visit www.melvillecity.com.au/afmevents 



All articles/photos/information to
Jamie McKinnon
by the day of the monthly meeting.

Email any material for the Newsletter to:
jamiemc1wa@gmail.com

Mobile contact: 0418334513

**Mosman Park Community Men's
Shed**

Contact Details

Email: admin@mpms.org.au
PO Box 4373 Mosman Park 6012
Tel: 93833354
Chairman
Tony Brown

