

Noises from:



Back To Life.

After a long lay-off due to the pandemic life has returned to a near normal state for the Shed though care has still to be taken re social distancing and sanitising. Rules are clearly laid out for Members to ensure there is compliance to regulations.. Hopefully there will be an end to restrictions in the near future but I think we have all learned a lot about how to make work places, eateries etc much cleaner.

Waroona Camp.

When restrictions were easy a little allowing movement to other areas of the state, this intrepid band of campers set off for Waroona to a camp site selected by Brett for a few days of camping, fishing, photography, chin-wagging and BBQs.



MPMSA Inaugural Caravan and Camping Venture

On the 13 May, eight intrepid Shed members, four of whom brought their wives/partners, gathered to camp in two groups (as required by Covid restrictions) at a lakeside property west of Waroona for our first camp adventure. Dave Beckley had worked tirelessly through the Covid shutdown to convene a group of caravaners and campers from our Shed who wanted to share conversations and experiences with other like-minded souls. Brett Pollock, our most intrepid camper, volunteered his son's property beside Drakesbrook Weir for the venue. Located amongst trees and cows, and with the water view, the location turned out to be a delightful spot for some wonderful comradery between members and a few of their wives. Good food and many tall stories, some of them probably true, were enjoyed. The group consisted of a motorbike, a 4WD towing Brett's teardrop caravan, a VW Kombi, two motorhomes, an off-road caravan and a camper trailer.

The camp involved two nights and three days which were filled with walking, fishing (none were caught), reading and photography. The one worker amongst us had his Zoom meeting in the middle of the paddock while his more mischievous fellow campers plotted various evil deeds, they might play on him. The weather was perfect, and a great time was had by all. While the Shed remains the focus of the members who attended the camp, this adventure showed that relationships formed at the Shed extend beyond the physical building. The activities undertaken at camp also demonstrate the interconnectivity of those interests. It was great to involve the wives of our Shed, something that will only strengthen Shed relationships. Congratulations to all those who attended and a special thank you to Dave and Brett for their initiative and effort. We hope this will be the first of many such adventures.

Richard Allen



Australian Darter drying its wings at the camp site.

Brown Kite - photo taken at Herron Point

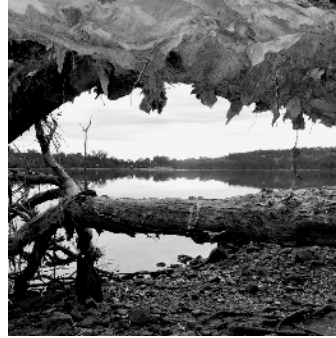
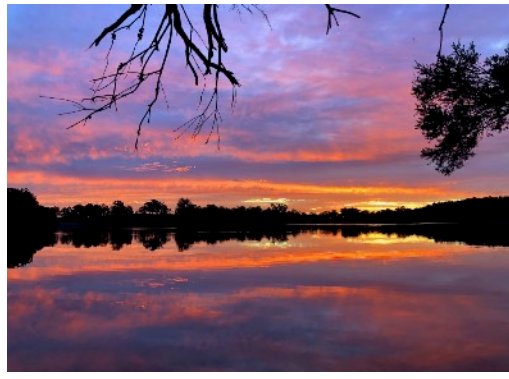


Pelican landing - on water??? - also at Herron Point which is a great spot for bird watching.

Photos courtesy Dave Beckley.

The photos received from the campers were superb so it was hard not to show them in this issue. They will no doubt prompt other members to consider heading off on any other camping expeditions organised by the Shed.

The below photos are: Twilight fishing; Sunset weir reflection; Top view; Smokey sunrise; Paperbark lake study and Camp roast
These photos are courtesy Nick



SHED OPENS

At last the Mosman Park Men's Shed has re-opened. All agree that it is great to have the Shed open again after 11 weeks of isolation. Some of our members have returned with a personal project all planned out and ready to start and some came back with the intention of helping get the shed back in to full operation. With the help of the latter group, by the first two days we were almost back to normal.

What are not normal to our Shed are the precautions that must be followed to prevent the spread of COVID virus. Although registering, hand washing, and social distancing are the priority for everyone, even visitors. There have been few complaints, but mostly the plan is working well. There are a few members that are slipping up by not sanitising the tools and equipment that they have used. Please be sure that you adhere to all the plan, otherwise we could be up for a severe fine and, dread the thought, closure again!

Since we are not allowed to share mugs could you please bring in your own personal mug (with your name on it) rather than using the expensive paper cups that are available.

Since the closure there has been some changes made in the Shed. One is the rearrangement of the Kitchenette (Smoko kitchen!). The change has given more space within the kitchen area and later a narrow counter will be added along the Office wall for sugar, milk, coffee and mixing. To improve the flow in the kitchen please move around it in a clockwise direction.

The other change is not so visible, but just as important. Richie Kiernan and Ian Worrell have spent a lot of time designing and building a dust extraction system for the Finishing Room. The result is that the finishing room can be used for painting jobs with minimal dust and fumes.

I would like to sincerely thank all members who have cooperated with the Shed closure and the COVID planning, it has been most appreciated by the Management Committee and myself.

Tony Brown

Bridge Players, Photography Group, ShedBoys

During the shut down these groups continued their activities either by Zoom meetings or just by taking pictures. The Bridge players had very successful Zoom meetings when they are able to engage in competitive and/or learning situations. The photography group initiated photo competition which was highly successful though some of the entries did not follow the regulations so had to be eliminated from the competition. The ShedBoys tried Zoom sessions but the time lags, difficulties with sound dominance of one player over another made this concept too hard to handle. The lads got back together in real space in the middle of the month and got back to enjoying the pleasure of playing as a group and exploring new material.

Unusual Newsletter

This is an unusual newsletter as, like most of the members of the Shed I was unable to get out and about and find items which would have been good to share with the membership. I am not usually into self promotion but the note below gives an idea of what has been occupying my time in lock down. It is a project I became really keen to do as I found few songs which really grabbed my attention and had never sung before. This, allied to my decreasing ability to play and sing due to "old age" and medical treatment gave me a purpose to put out something which I hope will be a worthy creation of music from the Celtic tradition.

On a personal note, I have seen a lot of the lock down time preparing to record a 15 track CD of Scottish (12) and Irish (3) songs. Three very fine musicians are backing my singing and guitar playing and I am pretty excited about what the CD will sound like. It should be ready to purchase late July!!!! Anyone interested in getting a copy will have all the information available when I know the release date. The songs are all traditional, not rock or rapp!!!!

NEW FROM IKEA



SOCIAL DISTANCE BENCH

THOUGHTS AND PRAYERS
GOING OUT TO ALL THE
MARRIED MEN WHO'VE SPENT
MONTHS TELLING THE WIFE
I'LL DO THAT WHEN I GOT TIME

Paddy took 2 stuffed
dogs to the Antiques
Roadshow....

"Ooh!" Said the
presenter, "This is a
very rare breed, do
you have any idea
what they would fetch
if they were in good
condition?"

"Sticks." replied Paddy.

I hate it when I see an
old person and then
realize that we went to
high school together.



All articles/photos/information to
Jamie McKinnon
by the day of the monthly meeting.

Email any material for the Newsletter to:
jamiemc1wa@gmail.com

Mobile contact: 0418334513

**Mosman Park Community Men's
Shed
Contact Details**

**Email: admin@mpms.org.au
PO Box 4373 Mosman Park 6012
Tel: 93833354
Chairman
Tony Brown**